



REPORT
OF THE
TEMPLE JEREMIAH ANNUAL MEETING

**A Caring Community
Open to All**

19 Iyar 5774 • May 19, 2014



TABLE OF CONTENTS

Agenda of the Annual Meeting of Temple Jeremiah.....	4
Mission Statement.....	5
President's Report.....	6-7
Report of Rabbi Paul F. Cohen, D.Min.....	8
Finance & Administration Committee.....	9-12
Brotherhood.....	13-14
Sisterhood.....	15
Committee Reports:	
Adult Learning.....	16
Building Management.....	17
Caring Community.	18
Communications.	19
Development.....	20
Education.....	21
Garden Project.....	22
Green Team.....	23-24
Investment Management.....	25
Leadership Development.....	26
Measuring Success.....	27
Membership.....	28
Outreach.....	29
Social Action.....	30-32
Spiritual Life.....	33
Youth.....	34-35
Appendix: 2013-2014 Worship & Programs.....	36-38
Temple Leadership: Board of Directors 2013-2014, Board of Directors 2014-2015 (proposed slate), Past Presidents, Temple Jeremiah Staff.....	39
The Year in Review.....	40-41

AGENDA

19 Iyar 5774 May 19, 2014

ANNUAL MEETING OF THE MEMBERS OF TEMPLE JEREMIAH

Call to order

D'var Torah.....Rabbi Paul F. Cohen, D.Min.

President's Report.....Ken Lorch

Financial Report.....Jeff Krupp

Nominating Committee Report.....Julie Ford

Final Comments and Questions

Closing Blessing.....Rabbi Paul F. Cohen, D.Min.

Adjournment

SOCIAL ADVOCACY PROGRAM

MEETING OF THE BOARD OF DIRECTORS

TEMPLE JEREMIAH

MISSION STATEMENT

- Temple Jeremiah is a Reform Jewish congregational family whose mission is to foster and invigorate a love for worship, study of Torah, and acts of tikkun olam in a caring community that embraces diversity in its membership.
- We are dedicated to lifelong Jewish education, tzedakah, social justice, and the State of Israel.
- We strive to fulfill our mission by building relationships that connect us as members of an extended family who recognize each other as created in the image of God.

—Adopted by the Board of Directors
April 26, 2004

PRESIDENT'S REPORT

Ken Lorch

THIS PAST YEAR HAS BEEN an incredible one for Temple Jeremiah. It started with strong tailwinds from Julie Ford, whose energy propelled us with a strong committee structure and solid leaders in each of our program areas. With a spending authority resolution that allowed our administrative staff to operate without having to get every expenditure approved by the board, and a board freed of the yoke of having to spend its time with the mundane day-to-day operations, we were positioned to instead consider the important issues facing our congregation.

Fortunately, we also are a congregation that continues to attract new members. This year more than 75 new families joined our congregation. Solid membership numbers allow us to balance our budget, even when a large number of our families still struggle from the financial impact of the recent economic crisis.

While we continue to retain a vast number of members across age groups, we do continue to lose too many families who never made the connection to their Judaism to understand the importance of synagogue life. That challenge is not unique to Temple Jeremiah. However, we are not sitting still. We are looking for creative solutions. In part, we are addressing it through a grant we received as a result of our participation in the Measuring Success program. Through various ideas suggested to us, we are attempting to strengthen our relationships with our members. We will continue



Temple Jeremiah 2013-2014 Board of Directors

BACK ROW (from left): Daniel Glassman, Lori Goldstein, David Loundy, Stephanie Victor, John Sobel, Michael Myers, Ed Shapiro, Jeff Krupp, Sami Levi, Marc Mayer, Joel Africk, Randi Gurian, Michael Schack, Art Gunther, Scott Levin, Brad Ross, Fred Kagan, Alan Toban, Julie Ford

FRONT ROW (from left): Judd Brody, Lynne Sorkin, David Ruskin, Barb Miller, Amy Torf, Ken Lorch, Rabbi Emily Segal, Rabbi Paul Cohen, Cantor Amy Zussman, Sara Turover, Alisa Patterson, Abby Lasky, Gabrielle Feldman

NOT PICTURED: Deb Dreyfuss-Tuchman, Dr. Anne Lidsky, Ann Milstein, Benji Perez, Nadine Tosk, Alan Turover

(continued)

PRESIDENT'S REPORT, *continued*

to reach out to as many of our congregants as are willing to reach back to us. It is our hope that each and every member will become more comfortable inside our walls and will look to the big tent we are, for all of their spiritual needs – whether that is in the form of prayer, personal reflection, life cycle events, education for children, education for adults, or a place from which to make our world a better place or to get whatever services they may need.

Of course, after the strong beginning of the new year, we did hit a headwind when Cantor Zussman announced her desire to spend more time with her family and retire at the end of this year. While our search for a new voice in our synagogue continues, so does our programming. We will not miss a beat through the coming transition.

This year we had all of the amazing programming described by the various chairpersons in this annual report. I am so proud of each and every area. I am particularly proud that we have fully engaged in all the areas I mentioned when I undertook the presidency last year. All of these activities are ways for us to connect with each other as well as creating a better world for those who come after us. We should all feel truly fulfilled by what we are doing.

Let me just list a few:

1. We had a congregational meeting to discuss our synagogue's position when asked by the URJ whether or not it should take a position in support of or against U.S. involvement in Syria. This program was not just energizing but was an important community action, where we talked about what is a vital Jewish value – speaking out for issues that are relevant to our community.
2. We held our first-ever advocacy summit on the subject of hunger in America, at which many of our state and federal legislators attended a congregational meeting, while simultaneously our children in their classrooms learned about the problem of hunger. This too was a time when we stood up for important principles and sent a strong message to our children and our neighbors of what we are committing to accomplish as a community.
3. Our Green Team held numerous educational programs on the subject of environmental consciousness. They also helped our synagogue become more green by making sure we had more vegetarian options at each meal we served, increasing our use of sustainable products, and providing monthly helpful hints on how we can all protect our environment. These and all the other things the committee did and taught are living examples of what we are doing to repair our world – real acts of tikkun olam undertaken by our community.
4. We provided over 9,000 meals between our Feed the Homeless and Backpack Blessings social action programs. In addition, 18 people helped in five different program areas to support the educational programs of schools in need in Waukegan. Again, these are the types of activities that have been at the core of our Jewish values and exhibited to our children and our community; what it means to be committed and connected Jews.
5. We not only held our first Special Needs Family Rosh HaShanah service but also opened our Purim Carnival early to families in our community with a member who has a special need. These are the actions that give real meaning to what it is to be an inclusive community.
6. We have been afforded the opportunity to participate in the Leave a Jewish Legacy program, which will train our leadership about the need for and benefit of leaving bequests and other types of gifts to the temple and to encourage our congregants to make those gifts. These acts of tzedakah will ensure what we are doing for our world can be carried on when we are gone.
7. Youth programming expanded in many directions – from the Babies and Bagels playgroup to Jeremiah Buddies to youth groups for those in Club 345 (grades 3-5), Jr JeTY (grades 6-8), and JeTY (grades 9-12). Dozens of young people participated in dozens of programs during the year. It then culminated in our hosting, for the first time, the first Chicago area NFTY-CAR convention Kol bo, where 125 Jewish teen leaders from all over the city came to Temple Jeremiah to pray, sing, study and play and bring amazing energy into our walls. Those are the connections that will ensure the health of our religion into the future.

I am so proud of what we did this past year and what we are planning to continue to do in the coming year. I look forward to your participation in some part of it. Please don't miss the opportunity to connect in some meaningful way with our community. You will grow from it and thank yourself if you do. So many of our programs are amazing and once you miss them, you will never get the same opportunity again. Join us under the tent – whatever your interest, whatever your need. There is something here for you. I look forward to being with you in the year ahead.

Shalom,
Ken Lorch

RABBI PAUL F. COHEN, D.Min.

Dear Friends,

I write to you as we come to the end of an amazing year filled with blessing, achievement, growth, celebration, and loss. This week (May 19) we begin reading from the Book of Numbers. Parashat Bamidbar, the first portion of the book, revolves around the taking of a census. God tells Moses to count the people in the wilderness. There is a great deal of commentary around this passage. Certainly God knows how many folks there are in the Israelite camp. It is, however, a time for Moses and the people to acknowledge each other and the value of their presence in the community.

Our annual meeting gives us the same opportunity; we get to acknowledge the important role that each person plays in our Temple Jeremiah family. We get to look at the year in review and celebrate our successes even as we evaluate the missteps. Of course, the biggest news this year is Cantor Amy Zussman's retirement after 28 years of devoted and loving service to the congregation. Cantor Zussman has been an invaluable member of our community. We are so happy for her and wish her and David every good thing in this new chapter. I am deeply grateful for the 14 years I have had working with Cantor Zussman leading worship, teaching, celebrating, and comforting.

It is a new chapter for Temple Jeremiah, as well. I want to express my thanks to everyone, volunteer and professional leaders, who continue to work in partnership to make Temple Jeremiah the wonderful community that it is. Rabbi Emily Segal, Dr. Anne Lidsky, and Daniel Glassman give of themselves 24/7. Rabbi Emeritus Robert Schreiber, David Lornson, Barbara Kite, Rabbi Debbie Helbraun, Phyllis Burg, Sheila Greenfield, Lia Lehrer, Jennifer Rosen, Jill Farkas, Donna Ryback, Lizzy Scheinkopf, Jola Dabala, Juan Carlos Sanchez, Jesse Sanchez, Jean Sanchez, Frank Pasek, and Patricia Hernandez play key roles at temple. Without one of them we could not accomplish the goals we have set for ourselves as a sacred community. Ken Lorch, Joel Africk, Randi Gurian, Barb Miller, Alisa Patterson, Michael Schack, Ed Shapiro, Jeffrey Krupp, Amy Torf, Lori Goldstein, Judd Brody, Deb Dreyfuss-Tuchman, Gabrielle Feldman, Art Gunther, Fred Kagan, Abby Lasky, Sami Levi, Scott Levin, David Loundy, Marc Mayer, Brad Ross, David Ruskin, Lynne Sorkin, Alan Toban, Nadine Tosk, Sara Turover, Stephanie Victor, Alan Turover, Ann Milstein, Benji Perez, and Julie Ford provide the backbone of our volunteer leadership. We are also so fortunate to have the ongoing input and support of our past presidents: Jim Foster, Joan Golder, Ron Sandler, Herb Horn, Mike Pollak, Diana Kaufmann, Mitch Slotnick, Howard Lanznar, and David Golder.

“We get to acknowledge the important role that each person plays in our Temple Jeremiah family. We get to look at the year in review and celebrate our successes even as we evaluate the missteps.”

I would be remiss if I did not name the members of the Cantor Search Committee: Susan Brody (chair), Fred Kagan, Ken Lorch, Joel Africk, Ally Marks Greenfield, Tracy Kellner, Steve Kleiman, Valerie Slotnick, Joan Golder, Michael Myers, David Lornson, and Ruth Adler. They have given of themselves, body and soul, to this selection process and I am truly grateful.

May we all celebrate the presence of one another, counting and cherishing the contributions that each of us makes that contributes to the welfare of our community. May we grow from the strength of this year to new strength.

Shalom,
Rabbi Paul F. Cohen, D.Min.

FINANCE & ADMINISTRATION COMMITTEE

Jeffrey Krupp, Treasurer

THE PRIMARY MISSION of the Finance and Administration Committee of the Temple Jeremiah Board of Directors is to ensure that our temple remains financially sound and is managed under business standards appropriate to a vibrant spiritual organization. The committee's responsibilities include monitoring the financial, legal, employment, investment and other business functions of the congregation. These functions are critical to support our primary spiritual, educational, social, programmatic, and humanistic missions.

This report discusses projected financial results for the 2013-2014 fiscal year ending June 30, 2014 and provides an overview of the budget for the upcoming year. The budget has been prepared by the Budget Committee and reviewed by the Board of Directors.

“Our temple family has increased over the last year. From March 2013 to the end of March 2014, our membership has grown from 909 to 937. Most of the increase has come from our pursuing younger families and singles to join the temple.”

Some key observations summarize the projected financial results for the fiscal year ending June 30, 2014:

- For year ending June 30, 2013 revenue exceeded expenditures in the amount of \$28,000. As of the end of April 2014, we are anticipating a slight excess of revenue over expenses for the year ending June 30, 2014
- Our temple family has increased over the last year. From March 2013 to the end of March 2014, our membership has grown from 909 to 937. Most of the increase has come from our pursuing younger families and singles to join the temple.
- We had anticipated that 231 families would be on reduced dues. The actual number is higher with 277 families on reduced dues as of March 31, 2014.
- The previous conservative investment philosophy of holding our reserves in certificates of deposit provided

limited investment income. This strategy protected the temple from losing money during the recession but does not generate additional revenue for the synagogue. The Investment Committee has commenced an investment strategy which will allow temple funds to grow while limiting risk.

PROJECTED RESULTS FOR THE 2013-2014 FISCAL YEAR:

As stated above, our last fiscal year ended with a surplus and current projections are that we will end the current fiscal year slightly better than breakeven as well. It is projected that revenues will be slightly higher than budget and expenses will be approximately at budget.

Our community benefits from adding full-paying members. That increase provides new revenue in addition to contributing to the Building Maintenance Fund. We also know the number of members can't increase forever so other new revenue sources are needed to support operations. Such sources include growth in our endowment program, room rentals and other gifts to the temple. While we pursue those sources, we also are initiating a process to review our system for establishing commitments and pursuing collections.

At the same time we look at revenue sources, the Board of Directors and our senior staff continue to look for opportunities for more efficient business operations. Our senior staff has been instrumental and supportive in prudently managing resources and cutting costs when possible.

(continued)

FINANCE & ADMINISTRATION

COMMITTEE, *continued*

Jeffrey Krupp, Treasurer

THE BUDGET PROCESS:

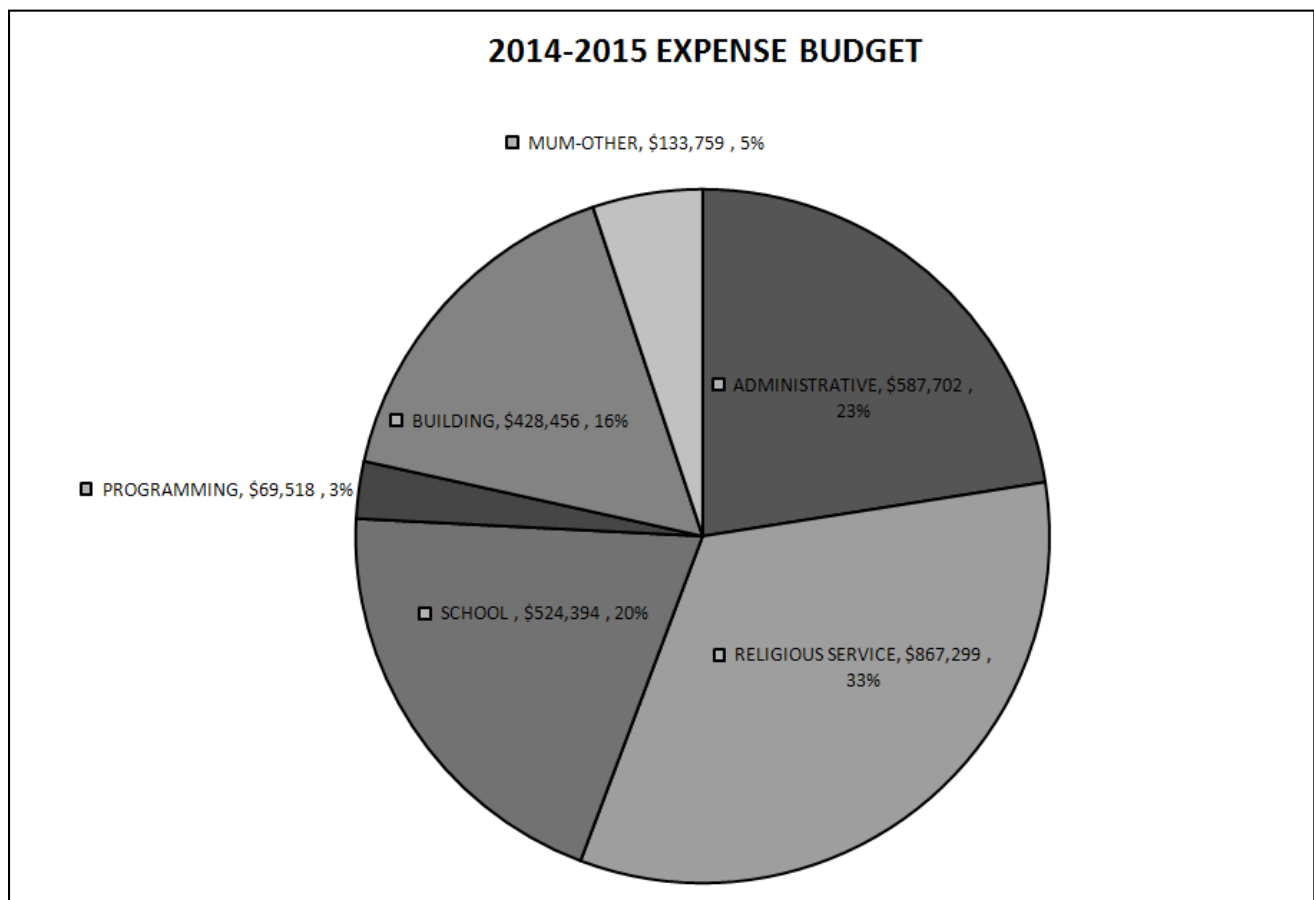
Approximately halfway through each fiscal year, the Budget Committee begins the process of analyzing financial performance for the current year and making projections for the end of the fiscal year. The budget for Temple Jeremiah is established in somewhat of a “fluid” environment as new members join while some members leave the congregation during the course of each year. This increase and decrease in the size of our congregation impacts programming costs, school enrollment, the costs of administration and other items. The Budget Committee works hard to provide the Board of Directors with guidance as to their best estimates of the financial assumptions, for the coming year. The committee meets with our professional staff and committee leaders to analyze trends in membership, revenue and expenses that may have an impact on the financial health of the congregation.

BUDGET FOR THE 2014-2015 FISCAL YEAR:

Each year brings financial challenges but we continue to meet the needs of the congregation and project doing so with a balanced budget in the coming year.

PROJECTED REVENUES:

The temple’s revenues are budgeted to be approximately \$2.61 million which is up from our current budget by



(continued)

FINANCE & ADMINISTRATION

COMMITTEE, *continued*

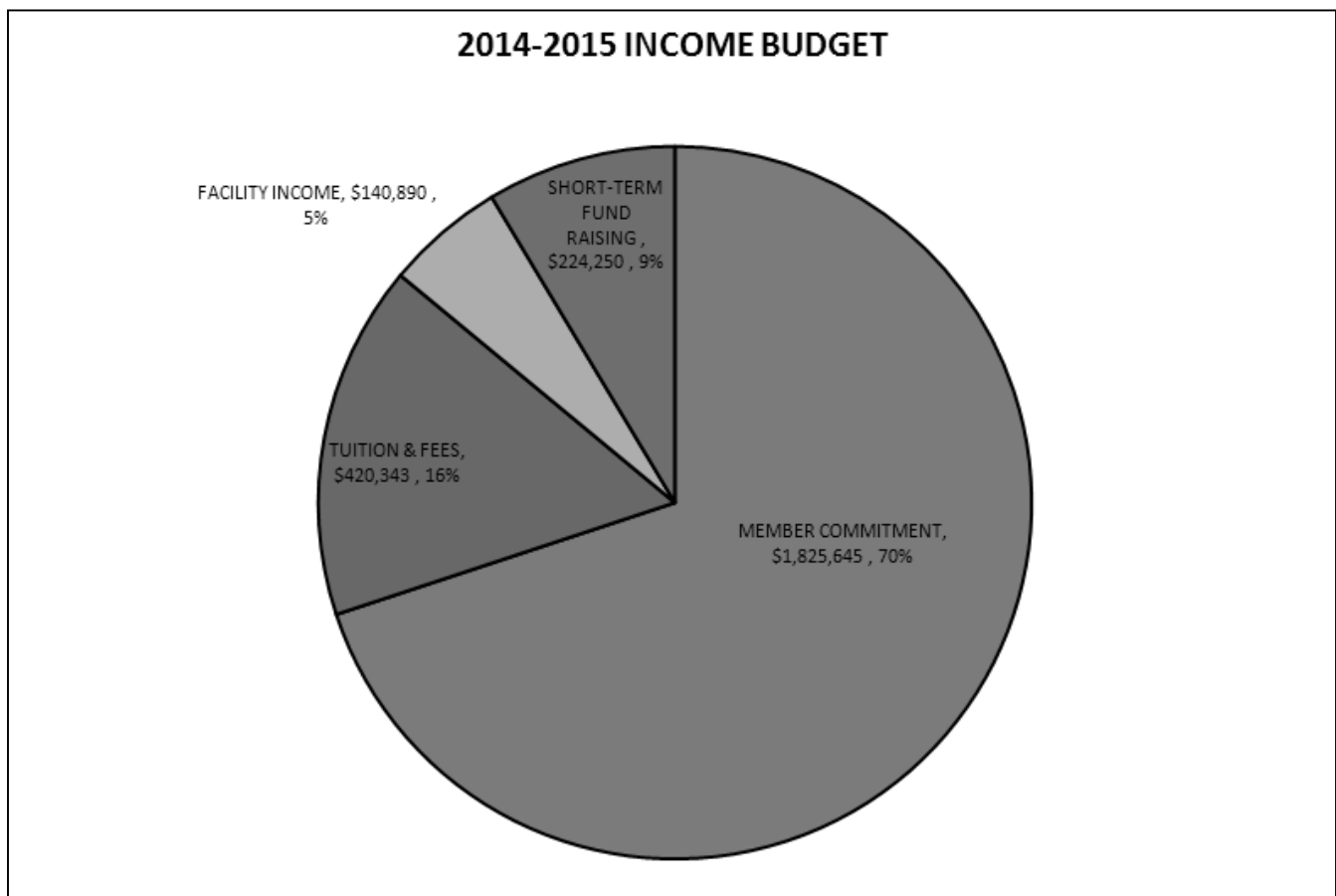
Jeffrey Krupp, Treasurer

\$65,000. There are a variety of offsetting increases and reductions anticipated for next year. Part of the growth will come from an increase in the annual financial commitment of \$56,000. This is substantially due to: 1) increasing member commitments by 3% 2) an expected net increase of 10 members and 3) increasing participation in Circles of Giving.

Other changes for the coming year include a decrease in school income due to estimated enrollments, a decrease in Bar/Bat Mitzvah fees due to a smaller candidate pool, an increase in non-member room rental revenue as a result of the expansion of the Safe Haven School, an increase in the Circles of Giving program, and the ongoing support of Families Helping Families.

At Temple Jeremiah, no one is turned away from our community due to the inability to fulfill their financial obligations. Unfortunately, 29.7% of our households require support in the form of reduced financial commitments. This was up from 26.7% the year before. As a frame of reference, prior to 2008, Temple Jeremiah only had approximately 10% of its families that needed financial assistance.

We are hopeful that we have seen the peak in families that need assistance and that we will begin to see an increase in the number of households that can fulfill their full annual financial commitments. However, as stated above, we are undergoing a process to review our entire financial commitment process. Our goal is to ensure it is equitable and efficient but set in a way to assure the continued financial health of the organization.



(continued)

FINANCE & ADMINISTRATION

COMMITTEE, *continued*

Jeffrey Krupp, Treasurer

Despite that, generous support of our Families Helping Families and Circles of Giving programs and other fundraising initiatives will remain important. While more of our members are on financial adjustment, ongoing contact with these families encouraging them to contribute to the best of their ability has resulted in an increase in the average per family commitments.

EXPENSES

Viewed as a business with a \$2.61 million budget, Temple Jeremiah experiences the same pressures as any other small business, including managing costs for salaries, insurance, utilities, etc. Personnel costs (salaries, benefits, and insurance) for our senior staff, administrative support staff, teachers and custodial staff continue to be the largest expense of our organization. Approximately 73.4% of our expenses are related to compensation for our valued staff.

Fees for religious and Hebrew schools, as well as our Bar/Bat Mitzvah programs cover 35% of our actual expenses for these programs. This reflects our recognition of the value of education to our membership and its importance in our mission.

“At Temple Jeremiah, no one is turned away from our community due to the inability to fulfill their financial obligations.”

The membership fee that we pay to the Union for Reform Judaism (MUM) is determined annually by a formula based on the size of our congregation. For this, we receive numerous benefits from the principal national organization of the Reform movement, including education for cantors and rabbis and programming support. The movement also supports the needs of less wealthy synagogues.

Temple Jeremiah is fortunate to have a talented team of volunteers who provide professional support to the temple staff in areas of employee benefits, tax compliance, legal and contract management, investment strategy and office administration. This substantially reduces costs we would otherwise pay. This tremendous partnership between staff and lay leadership goes well beyond direct cost savings, however, and is an essential part of the management of the affairs of our congregation.

Participating in various aspects of the Finance and Administration Committee are:

Joel Africk, Randi Gurian, Ken Lorch, Jeff Nitzkin, Ron Rooth, Michael Schack, Stephanie Victor, Rabbi Cohen, Danny Glassman and Jeff Krupp. With assistance from Cantor Zussman, Rabbi Segal, Dr. Lidsky and Jennifer Rosen.

BROTHERHOOD

Alan Turover, President

BROTHERHOOD PROVIDES A UNIQUE OPPORTUNITY for the men of Temple Jeremiah to express and fulfill their social as well as their service-oriented desires. It consists of a dedicated, yet warm and welcoming group of men of all ages with a wide variety of interests and, not surprisingly, a very broad range of professions. Brotherhood is a haven where men can talk about whatever is on their mind. Whether the subject is a formal business agenda item like, "How does Brotherhood evaluate potential projects and financial contributions based on a disciplined, yet effective philanthropic philosophy based on Jewish values?" to the less formal, "Guess what my kids/grandkids are doing," or "Do you know anyone who you can recommend to fill an xyz professional/personal need?"

The chances to interact with Brotherhood are many and varied. Programs and activities are designed with the thought of strengthening men's associations with Judaism, adding value to their relationship with Temple Jeremiah, and deepening their friendship with each other.

Each activity has both a "business side" as well as a "social side." The "business side" is directed towards those activities that help to support our Temple Jeremiah community at large as well as our local community in general.

Active Brotherhood programs include a \$2,000 matching gifts program to support the St. Baldrick's fundraiser to raise money for pediatric cancer research; co-sponsoring a program with Sisterhood that highlighted the resources available to us through the North Shore Senior Center; the development of a new program to provide two \$1,000 scholarships allowing temple youth to attend Olin-Sang-Ruby Union Institute; our annual Opening Breakfast; our monthly Kibbitz 'n' Bites breakfasts; our yearly Family Bingo Night; our participation in and contributions to the Adult Purim Party; our Brotherhood Shabbat Dinner and Worship; the Religious School Barbeque; a clothing drive for Whittier School; packing and delivering lunches for Backpack Blessings; involvement in sports activities like a Cubs-Sox season preview; annual pizza, beverages, and Bears Night at the temple. We also had a camaraderie-building "schvitz" evening; a great jazz night at the historic Jazz Showcase in downtown Chicago; a dinner and basketball game at Northwestern; and we have a cigar night, baseball game, golf outing, a beer tasting, and other activities planned for the near future. To help our local environment, we will soon be attacking invasive species at the River Trails Nature Center and will also have our annual buckthorn



Brotherhood Bingo: Dec. 8, 2013

(continued)

BROTHERHOOD, *continued*

Alan Turover, President

removal program during the warmer weather.

Our Brotherhood Speaker Series is in full swing. Bill Brown gave a presentation on “Lighting,” Rusty Colman on “Secrets of Animation,” Joel Rovner on “Financial Planning and Insurance,” Gerry Lane on “Ethnic Media,” Greg Richards on “Food Service,” and upcoming talks already scheduled by Bruce Zimmerman on “Work and Leisure” and Mike Pfeifer on “Google Ad Words.”

We also have an exciting Brotherhood professional, social, and mentoring networking program as well as a Men’s Health Panel under development.

So, we invite all men to come to a Brotherhood meeting. Say hello to current friends, meet new friends, become more involved in your favorite temple and Brotherhood activities, or even suggest a new program in which you would like to participate.

Finally, huge thanks and much appreciation are due to those members who volunteer their time, talents, and ideas to keep all these programs and activities going. Special thanks to those who have worked on various committees.

**“Say hello to current friends,
meet new friends, become
more involved in your favorite
temple and Brotherhood
activities, or even suggest a
new program in which you
would like to participate.”**

Brotherhood Committee Members:

Bill Brown, Brad Ross, Bruce Zimmerman, Charles Gurian, David Abrahams, Gerry Lane, Greg Richards, Joel Rovner, John Maeglin, Larry Tracey, Lee Saldinger, Mark Sulkin, Mike Pfeifer, Rusty Colman, and Alan Turover

SISTERHOOD

Ann Milstein, President

MISSION STATEMENT: Temple Jeremiah Sisterhood is an organization of women who work together to enhance and enrich the lives of its members, the temple, and the community at large. Our mission is to foster and further the highest ideals of Judaism as an auxiliary of Temple Jeremiah. In cooperation with other temple committees, Sisterhood organizes and encourages religious, educational, community and social activities for women of all ages and our congregation at large. Sisterhood promotes the aims of the Women of Reform Judaism and the WRJ Midwest District.

We fulfill our mission through:

SOCIAL PROGRAMS

- Annual Opening Event, welcoming new and continuing members
- Co-sponsor Adult Learning programs
- Sisterhood Game Night

RELIGIOUS AND SPIRITUAL PROGRAMMING

- Yom Kippur "Break the Fast" Oneg
- Women's Seder
- Sisterhood Shabbat Dinner and Service
- Adult Purim Party

SOCIAL ACTION AND PHILANTHROPIC ACTIVITIES

- The ARK High Holy Day Food Drive
- Direct monetary support and fundraising for Social Action projects
- Holiday Gift Tag program through The ARK and JCFS

EDUCATIONAL AND TEMPLE PROGRAMMING

- New members' gifts
- Bar/Bat Mitzvah and Confirmation gifts annually
- Sponsor Purim Carnival Lunch

The Sisterhood Gift Shop is our second source of revenue after membership dues. Our gift shop carries various Judaica and also sells stationery for all occasions. Our shop is run by volunteers whom we greatly appreciate.

Sisterhood Officers and Gift Shop Volunteers:

Hershy Pappadis, Babette Sanders, Gayle Edmunds, Lynne Jolles, Gabrielle Feldman, Gail Lanznar, Julie Kosarin, Arden Brenner, Judy Craven, Melissa Celnik, Jill Odzer, Jennifer Bruns, Katie Bushala, Susie Fein, Peggy Nitzkin, Ilana Omens, Suzy Salerno



Sisterhood Women's Seder: March 19, 2014

ADULT LEARNING COMMITTEE

Sara Turover, Chair

WE HAVE HAD a very successful year with over 28 programs which have covered a wide range of topics. **Our goal is to offer our members a variety of topics and stimulating presenters to both educate and entertain.**

To recap our year, besides Rabbi Cohen's popular and timely **Pulse of Our World** each month and Rabbi Segal's programming from the Green Team, we hosted a number of outside groups: **Magen David Adom**, **Honest Reporting**, the Yiddish and Jewish cultural organization **Yivo**, the **North Shore Senior Center** (to inform us of all its opportunities ... classes, activities, fitness center, etc.), and **StandWithUs** (to help our college-bound juniors and seniors become effective ambassadors for Israel on college campuses). We welcomed the **Israeli Consulate** with Robert Schwartz, Director of Political & Interreligious Affairs, giving us an update on the Middle East. We were fortunate to have Rabbi David Saperstein (designated in Newsweek's 2009 list as the most influential rabbi in the country and described in a Washington Post profile as "the quintessential religious lobbyist on Capitol Hill") present at our successful JUF Brunch.



Scholar-in-Residence Weekend with Rabbi Jeffrey Salkin: March 9, 2014

Our wonderful **Scholar-in-Residence** featured Rabbi Jeffrey Salkin on the topic "Martini Judaism: For those who want to be Stirred and Shaken." Rabbi Salkin did just that. He stimulated us to think of new ways for Judaism to have impact on ourselves and the world.

Rabbi Cohen and our Director of Education, Anne Lidsky, brought us (adults and our older students) a very interesting program (a surprise presentation, in fact) on how to handle tough questions about Judaism that come up as our children move through the upper grades and college.

Cantor Amy Zussman gave a special presentation to commemorate Yom HaShoah in which she told the story of a survivor and gave us examples of songs written and sung in the ghettos and concentration camps which express an indomitable spirit through music.

Ruth Adler did a great job giving us food for thought with her book discussions on two very meaty and thought provoking books: "Suite Francaise" by Irene Nemirovsky and "The Warmth of Other Suns" by Isabel Wilkerson. Be on the lookout for her new titles for this coming year.

Thanks to Barb Miller and her team, we hosted a very successful Hunger Summit led by a panel of state legislators. There were related activities throughout the weekend.

Babette Sanders led us in a session of age-appropriate exercises to enable us to stay in good shape through the years.

Is this all? No, there was more! If you feel any regret for not attending and enjoying any of these programs, you will have an opportunity again next year. Watch for the Adult Learning Program Guide which will be published and distributed at High Holy Days. We are working on programming now.

Ideas for programs you would like to see take place? Don't be bashful. Please e-mail me at ssturover@gmail.com. If you would like to join our wonderful committee, let me know.

Adult Learning Committee Members:

Rabbi Cohen, Rabbi Segal, Anne Lidsky, Ruth Adler, Eileen Brottman, Randi Gurian, Hershy Pappadis, Emmy Rothschild, Shelly Trilling, and Sandy Wexler. Thanks also to Sisterhood and Brotherhood for their help in sponsoring several programs.

BUILDING MANAGEMENT COMMITTEE

Michael Schack, Chair

THE BUILDING MANAGEMENT COMMITTEE'S OBJECTIVE IS TO preserve and enhance our facility in support of Temple Jeremiah's mission statement. The committee achieves its objectives by being proactive through preventative maintenance programs, property management, long range capital planning, capital projects and assisting with current building issues.

In 2013/2014 we were successfully able to further improve on our home by completing the following projects:

- Install new water fountain outside the sanctuary
- Install new doors for the coffee bar
- Tuckpoint the exterior of the building
- Install new kitchen cabinets
- Bid out new security cameras and a new access control system
- Install new HVAC control system which will lower utility costs (in progress)

Much of the year has been spent behind the scenes to bring more enhancements to the building as well as develop policies and procedures to assure the building remains well maintained and secure for the future. Some of the projects that will be forthcoming due to the research completed over the year include:

- Create a detailed building inventory
- Parking lot lighting for efficiency and uniform coverage
- Repair west lobby doors
- Add panic hardware to stairwell doors for code upgrade compliance
- Roof study and possible selected roof replacements
- Relocation of laundry facilities currently in the kitchen
- Additional furniture in the Tarshish Lounge and west foyer
- Repair of selected furniture through-out the building

The Building Committee spent significant time on evaluating the temple's security from an operational and physical viewpoint. The committee hired a security equipment expert to assist the temple in bidding out equipment enhancements to the building. The bids have been received and are going through a peer review process prior to making recommendations and implementation. Further, the committee has been formulating emergency plans which were vetted through the police and fire department. This was a very difficult and time-consuming process but one that the committee felt deserved significant attention as every life is precious.

The Building Management Committee is always seeking members with specific knowledge of HVAC, electrical, plumbing, and similar areas. In addition, members with construction experience or engineering skills would be valuable additions to the committee. We also welcome any suggestions or comments congregants may have to improve Temple Jeremiah's facility. Please contact Michael Schack at 847.509.1717 or Daniel Glassman at the temple if you would like to serve on the Building Management Committee or have any suggestions.

Building Management Committee:

Julie Ford, Stephanie Victor, Daniel Glassman, Steve Blinderman, Lynne Sorkin, Tom Stat, Adi Klinghofer, Michael Crane, Don Kooperman, David Lorig, and Michael Schack

“Much of the year has been spent behind the scenes to bring more enhancements to the building as well as develop policies and procedures to assure the building remains well maintained and secure for the future.”

CARING COMMUNITY

Joey Orloff, Chair

MISSION STATEMENT: To reach out to the congregants in times of sadness or celebrations. This committee creates a sense of community among our temple family through “g’milut chasadim,” acts of loving kindness. We serve as partners with God in caring for one another.

The Caring Community has continued its acts of reaching out to congregants in times of need, illness, and grief as well as in times of great happiness. The areas in which this deeply committed group has been active include:

- Caring cards. Reaching out to congregants who have experienced a sad or joyous occasion.
- Mobile Mitzvah. Transportation to temple worship services, activities, medical appointments, etc., as needed or requested.
- Providing meals to congregants through the “Caring Meals” group and assembly of congregants who are contacted via e-mail blast about an opportunity to help a specific family as needed or requested; homemade or take-out meals are brought to the congregants that could use some “Jeremiah nourishment” and well wishes.
- Linking one congregant going through an illness or life situation with another who has experienced something similar in order to provide support.
- Helping to make a minyan for shiva.
- Reminding fellow congregants of resources available through the Caring Community, the temple, and the community organizations through the Covenant and other temple communications.
- Caring Community continues to support the “Thanksgiving for the Homeless” program in Chicago. Along with other local synagogues, and our social action group, they provide dinner and serve up to 300 guests near Thanksgiving.
- Shiva coordination. This group offers support and helps to prepare the congregants home where families will sit shiva after services/burial. Our volunteers will be at the home to receive packages, catering platters, put up coffee and set tables while the family is at services. This is hopefully one less thing for the grieving family to worry about.
- “Chicken Soup Group.” This group prepares a little “Jewish Penicillin” for those that are home sick or recovering. Chicken soup is prepared ahead of time and kept at Temple Jeremiah. When we hear that another congregant is ill and could use a little soup we bring it to their home.



Soup's On: Come Stir the Pot! — Jan. 26, 2014

Please join with us to help support our fellow congregants in times of sadness or need and rejoice with them in times of joy. We are always looking for more volunteers! Please be in touch with either Rabbi Segal, Joey Orloff or a member of the committee to get involved.

Thank you so much to all of the current volunteers for their continued support over the year. The generosity of time and devotion by our current Caring Community volunteers is what helps make Temple Jeremiah more than a place of worship but a community. It has been truly a wonderful year and amazing to see our community grow.

Caring Community Committee Members:

Joey Orloff (chair), Barb Kite, Patty Turim, Art Sutton, Lori Goldstein, Joel Rovner, Claire Bernstein, and Peggy Nitzkin

COMMUNICATIONS COMMITTEE

Alan Toban, Chair

THE COMMUNICATIONS COMMITTEE was formed in the summer of 2010 to determine the optimal way to communicate with our membership and the greater community. Our goal is to provide cost-effective communication through the use of a variety of media.

Over the past four years since this committee's inception, the methods available to communicate electronically have continued to evolve, increase, and become more familiar to a greater number of congregants. During this same time, the use of paper-based U.S. Mail has become slower and more expensive. The committee's goal has not changed – it has become more important and complex.

This year:

- The process of migrating to a new website was completed. Our website is now easier to manage and more user-friendly.
- Using the information collected from electronic data tracking and congregant surveys, the current delivery methods being used for our regularly scheduled communications were reviewed for potential improvement going forward.
- The committee invested time in learning more about the way social media is being used by other organizations. At the 2013 URJ Biennial the rapid changes in methods of communication took front stage and allowed us to learn what other congregations are doing to answer these challenges.
- In keeping with goal of the Board of Directors to implement the strategies suggested by Dr. Ron Wolfson in his book "Relational Judaism," committee members learned more about expanding social networking through the use of Facebook, Twitter, and interactive blogs.
- This year also saw the fulfillment of goals set in Temple Jeremiah's 2011-2016 Long Range Plan. Changes were implemented in some of our electronic communications and our website. It was also decided that due to the wide spread use of portable computing devices, the goal of providing computers for congregant use in the library is no longer a practical goal.

For the upcoming year, the Communications Committee's plans include:

- Exploring ways to increase opportunities for interactive communication between congregants.
- Offering educational opportunities for the lay leadership and congregants. These will be intended to improve their understanding and use of electronic social media.
- Monitoring and improvement of our website to ensure that it meets our ongoing needs.
- Continued investigation of the long term goal of adding the ability to broadcast our religious services and other events held at the temple.
- Remaining aware of the goals of the Green Team and the need to limit our paper-based communications.
- Other items as suggested by the congregation.

Communications Committee:

Andi Berkowitz, Jeffrey Berg, Deb Dreyfuss-Tuchman, Debbie Flapan, Sandy Frum, Daniel Glassman, Carol Golder, Alex Gordon, Sheldon Greenberg, Loryn Kogan, Julie Kreiter, Abby Lasky, Lia Lehrer, Natalie Levy, Marissa Miller, Barbara Pritikin, Hannah Robbins, Wendy Rosenholtz, Molly Schack, Carl Segal, Gita Shipkowitz, Michael Shmarak, Regan Sonnabend, Terri Stat, Alan Toban, Nadine Tosk, Patricia Turim, Amy Weintraub, and Cheryl Zatz



Temple Jeremiah's new website

DEVELOPMENT COMMITTEE

Randi Gurian, Chair



THE DEVELOPMENT COMMITTEE IS CHARGED WITH RAISING FUNDS to decrease the temple's reliance on annual commitments. Gifts raised by this committee help ensure membership is available to all families regardless of need, respond to necessary capital improvements and repairs, and underwrite our high quality programming. This includes as a major focus increasing our Endowment and other special purpose funds. This year we accomplished these tasks through several initiatives.

The committee worked to educate the board and membership about the need for and use of our development dollars, as well as to thank those households who participate. As part of that, our activities this year included a survey about attitudes towards development and an education program for the board.



One very successful development effort is our Circles of Giving program. This program recognizes members who contribute enhanced dues at various levels. The program, now in its fifth year, has grown to 62 families, with donations surpassing \$80,000.

We continue to make memorial plaques and Wall of Life leaves available to congregants, and to send notices about their availability at appropriate moments in our lives.

We applied for and were invited to participate in a Federation program called "Leave a Jewish Legacy." This program provides a \$20,000 challenge grant if a certain number of congregants agree to leave a bequest or make another form of planned gift to the synagogue. The intent is to ensure the work

Celebrating Amy Gala: April 12, 2014

that is being done in our community will be sustained by a larger endowment when those who are here and support it are no longer around. Congregants who sign a letter of intent will become a member of our Covenant Society, which recognizes those of us who have agreed to make such a contribution to our synagogue's long-term health.

Our annual fundraiser, ably chaired by Abby Lasky and Gabrielle Feldman, raised over \$40,000 to be used for music programming and to fund the Cantor Amy Zussman Fund for Music. Three cheers for Abby and Gabrielle and the many other volunteers who helped them implement an event which succeeded on all levels, social and financial!

As I assume the role of chair of the Development Committee, we want to thank and applaud David Ruskin who has chaired the committee for the last five years. Under David's leadership we established new initiatives and moved forward in developing a culture of giving in the congregation.

Goals for next year include the creation of a three-year development plan, implementation of the Leave a Jewish Legacy initiative, and enhancing our Circles of Giving program.

Development Committee Members:

Mitch Slotnick, Deb Dreyfuss-Tuchman, Marilyn Appelson, Joel Africk, Abby Lasky, and Ken Lorch, and new member Stephanie Victor. Additionally Lia Lehrer and Danny Glassman play an invaluable role, and do it with smiles!

EDUCATION COMMITTEE

Joel Africk, Chair

MISSION STATEMENT: THE EDUCATION COMMITTEE at Temple Jeremiah is dedicated to reviewing and supporting the curriculum, activities, and programming of our religious school and Hebrew school and ensuring meaningful, effective Jewish education, resulting in the transmission of Jewish heritage and knowledge to future generations.

We are proud of the learning that takes place and the community we are building in our religious and Hebrew schools at Temple Jeremiah. We offer exciting, creative and varied ways to teach Jewish culture, rituals, history and Hebrew to the youth of our synagogue. Our program succeeds in educating our students to be active participants in Temple Jeremiah's spiritual services, in the larger Jewish community, and in acts of tikkun olam (repairing the world).



Hebrew school seder: April 9, 2014

Each week, the religious school is engaged in programs throughout the synagogue. Small group, all-grade, all-school, and multigenerational programs occur during the year. The religious school hosts outside speakers throughout the year. Topics this year included anti-bullying (be an “upstander” and not a bystander), social action and tzedakkah, comparative religion, the Holocaust, media bias, genocide, and a host of issues important to Jewish youth. Our teachers are committed to help the children build a sense of community in their classrooms. Our madrichim (teachers’ assistants), typically older students who have themselves come through the school, do a fantastic job of assisting the teachers in class and relating to our children. Our hope is that these efforts will result in new friendships and an increased sense of community among students and parents alike.

This year was marked by several new and innovative educational programs at Temple Jeremiah:

1. Shalom Learning, an alternative program for 6th graders in religious school that incorporated some technology and online learning.
2. Moving Traditions: Rosh Chodesh and Shevat Achim, a monthly gender-based community-building program for 6th, 7th and 8th graders
3. Hebrew Online and Hebrew with Smartphones, technology-based programs we offered to assist students learn Hebrew in their early school years. Temple Jeremiah was selected this year (one of only four temples in the Chicago area) to pilot a technology-based professional growth opportunity for educators and teachers.
4. Finally, this year marked the first full year of formal accreditation for the religious and Hebrew schools. Fewer than 25 congregations out of 875 Reform synagogues in the United States have received this accreditation by the National Association of Temple Educators.

Last year, we surveyed students at the end of the year (6th and 9th grades) and we were impressed by the thoughtful feedback we received from our students. This year, we made some program changes to reflect input from the survey results, including increased offering of elective classes in 5th through 8th grades, and increased utilization of technology (but not at the expense of community building). This year the Education Committee is undertaking another student survey.

The College Connection program, run by a committee of great volunteers, helped us maintain our Jeremiah link to 60+ college students from the congregation. Thanks to the committee members!

Education Committee Members:

Joel Africk, Claire Bernstein, Andrea Goodman, Art Gunther, Michael Myers, Marcia Osher, Lori Ruskin, Laurel Shapiro, Linda Shore, Barb Kite, Fred Kagan, Brad Ross, Lisa Schurgin, and Anne Lidsky

GARDEN PROJECT

Gary Stolberg, Chair

MISSION STATEMENT: The mission of the community garden is to foster camaraderie among congregants through a shared interest in eco-friendly gardening and service to the needy. We will accomplish this by donating our crops to the Northfield Food Pantry. We support the pantry's motto: "Hunger is unacceptable in our community."

The garden was established on the south side of the temple property last spring with a combination of raised beds and grow boxes. Our crops included tomatoes, peppers, Swiss chard, eggplant, green beans, and herbs.

Water was graciously provided by Michael Cohen and his family, who live in the house just south of the temple. A rain barrel was used as well. Maintenance was accomplished through an online watering schedule. This allowed for all participants to volunteer their services at their convenience and for seamless monitoring of the schedule. Several loads of produce were delivered to the Northfield Food Pantry throughout the season.

The 2014 growing season will see an expansion of the garden. An additional 8x10 bed will be established along with an additional rain barrel. We will also foster more interaction among members by hosting potluck dinners throughout the season, the first of which occurred this April 2014 at the Stolberg house.

Our vision for the future includes continued support of the Northfield Food Pantry as well as increased interaction of the members through social events and gardening education. Our challenge in the future will be sustaining physical growth with limited water resources.



Jeremiah Garden: June 2014

Garden Project Volunteers:

Gary Stolberg (Chair), Jason Mitchell, Rimma Kerzner, Marc Mayer, Cathy Cohen, Barry Slotnick, Sheila Schlagger, Annalise Flanagan-Frankl, Brad Ross, Ed Shapiro, Scott Nathanson, Robert Blomquist, Fred Kagan, Dan Schwartz, Jay Greenstein, Michael Cohen, Elan Adler, Tara Subeck, Susie Fein, Andrea Brown, Judy Craven, Kim Nathanson, Linda Stolberg, Jon Pazol, Sherri Laurens, Daniel Glassman, and Rabbi Segal

GREEN TEAM

Barry Slotnick, Chair

THE TEMPLE JEREMIAH GREEN TEAM IS well into its second year of existence, and continues to work toward completing the GreenFaith certification program. The team is composed of congregants interested in promoting environmental awareness and sustainability within the Jeremiah community and beyond. GreenFaith works with religious institutions around the country to help them achieve a level of environmental awareness and activity through three distinct core values: Spirit, Stewardship, and Environmental Justice. GreenFaith believes that protecting the earth is a religious value, and that environmental stewardship is a moral responsibility. These sentiments certainly dovetail with the Jewish value of tikkun olam.

Since April 2013, and the last annual report, the Green Team has worked to not only fulfill the necessary requirements for GreenFaith, but more importantly to create a culture of environmental awareness, sustainable development, and stewardship throughout Jeremiah, both with the congregation and leadership/staff. We are pleased to update many notable accomplishments, some carried out by the Green Team and some in partnership with or carried out by other temple groups and committees over the past year, including (but certainly not limited to):

- The installation of a new water filling station in the front lobby coat room, promoting the use of reusable water bottles as opposed to plastic bottles, and finishing up the elimination of bottled water from all temple events.
- The introduction of Fair Trade certified coffee in the lobby, in the office, and at temple events.
- Monthly “Eco-Tips” which appear in each issue of The Covenant, written by Green Team communication liaison Ed Shapiro, as well as numerous articles in The Covenant written by Green Team members on issues of the environment and environmental justice.
- Paper reduction in the temple administrative office, including printing on the back side of paper and a conscientious decrease of paper use overall.
- Power reduction in the temple administrative office, including putting computers on “sleep” mode during the day when not in use, stickers alongside light switches all over the building to remind staff and others to turn off lights, and the installation of motion sensors for lights in staff bathrooms.
- The creation of the Temple Jeremiah Garden, under the leadership of Gary Stolberg and Jason Mitchell, who have now coined the name the “Natural Born Tillers.” The garden, located in the grassy area south of the south parking lot, serves as a model for the congregation to the importance of locally grown, fresh, pesticide-free and non-genetically modified produce.



TOP: Jeremiah-Primrose CSA — June 2013

BOTTOM: Alex Cicelsky of Kibbutz Lotan with our Hebrew school students — May 2014

(continued)

GREEN TEAM, *continued*

Barry Slotnick, Chair

- The successful engagement of a Community Supported Agriculture (CSA) group, Primrose Farms in Wisconsin. Primrose delivered fresh, organic produce to congregants throughout last summer. The Green Team has enlisted a new, even more local, CSA (Sandhill Family Farms) to deliver fresh, organic, non-GMO produce, as well as meat and dairy products, this summer for any interested congregants.
- The first outdoor Friday night Shabbat service, held in July on the south lawn near the TJ Garden. The service celebrated the environment and being outdoors, and another is planned for the upcoming summer.
- “It’s So Easy Being Green” was chosen as the theme of the 2013-2014 religious school year. On the first Sunday of religious school, the leadership and clergy performed a spirited song, dance, and play that celebrated environmental awareness and caring for the planet. Environmentalism has been highlighted to all students each Sunday throughout the school year and there will be an exciting culminating program in partnership with Pushing the Envelope Farm for religious school students and their families.
- The use of 100% recycled paper for various temple print needs, including the High Holy Day trifold.
- The Green Team hosted an environmental fair in November, which featured demonstrations on how to make a rain barrel and safe cleaning products as well as the benefits of solar power for both home and business.
- A Styrofoam collection occurred after Chanukah, whereby congregants brought in Styrofoam from gift packaging that cannot be recycled in municipal curbside recycling programs. The collected Styrofoam was brought to the City of Highland Park recycling center, one of the few facilities in the State of Illinois that properly recycles Styrofoam.
- The February 2 “Pulse of Our World” event was environmentally focused, and the guest speaker, Josh Mogerman of the Natural Resources Defense Council (NRDC) spoke about the pet coke piles on Chicago’s Southeast side and how this dirty byproduct of BP’s oil refining in Whiting, Indiana, is causing multiple environmental and health issues in these neighborhoods.
- Rabbi Segal created and hosted a Tu B’Shevat seder to celebrate the holiday often referred to as “Jewish Earth Day.”
- Earth Day activities included:
 - A guided tour of the Southeast Side of Chicago which highlighted the environmental injustice taking place, including the aforementioned pet coke piles; Rabbi Segal and Barry Slotnick attended the tour.
 - A screening of the environmental documentary “Terra Blight” in the stage area, followed by a spirited discussion of recycling “e-waste” and advocacy/awareness building steps.
- An evening with Alex Cicelsky, a founding member of Kibbutz Lotan, one of two Reform Kibbutzim in Israel. Kibbutz Lotan was founded in 1983 by Israeli and American youth who built a profit sharing community based on pluralistic, egalitarian and creative Jewish values while protecting the environment. Alex also spent time with all of our Hebrew school students on that Wednesday sharing with them about the Kibbutz and their work.
- Brotherhood and Green Team joined together to clear out invasive species at a local nature preserve.
- And coming up soon, a Beach Clean-Up at Gillson Beach in Wilmette on June 1, organized by Green Team member Judy Craven.

“It’s So Easy Being Green’ was chosen as the theme of the 2013-2014 religious school year.”

The Green Team is proud of its accomplishments to date and look forward to receiving GreenFaith certification in December. The team’s mission and activities, however, will continue long after the December certification. The team is always looking for committed, motivated congregants with an environmental commitment. Please contact Rabbi Segal or Barry Slotnick at bslotnick@varisport.com if you are interested in joining.

Green Team:

Barry Slotnick (chair), Brad Ross, Marc Mayer, Fred Kagan, Emmy Rothschild, Annalise Flanagan-Frankl, Judy Craven, Ed Shapiro, Olga Kornfeld, Ken Lorch, Daniel Glassman, and Rabbi Segal

INVESTMENT MANAGEMENT COMMITTEE

David Loundy, Chair

TEMPLE JEREMIAH IS IN GOOD FINANCIAL SHAPE, especially when compared to many other religious organizations, but it takes effort to stay that way. The Temple Jeremiah Endowment Fund, together with other reserve funds, is smaller than is advisable for a community our size. While those funds provide some protection against unforeseen circumstances, it does not produce surplus income to support community activities as do the foundations of some religious organizations. Shepherding the process of obtaining contributions to those funds is the role of the Development Committee and one of the roles of our board. The management of the assets in the various reserve and dedicated funds (e.g., the building fund, the prayer book fund and the newly established Cantor Zussman Fund for Music) and the Endowment for the long term is the role of the Investment Management Committee.

This committee is focused on preserving the longevity of reserve funds and maximizing the value of funds before they are needed. Specifically, the temple by-laws, in reference to the temple's Endowment, provides that "funds received by the temple for the Endowment Fund are to be invested to provide a hedge against inflation and reasonable growth and income consistent with the goals of a permanent endowment." This standard is applied by the committee to all funds which it is charged with managing.

The committee, in consultation with the Building Committee, the Budget and Finance Committee, and the Board of Directors, have identified the funds that may be needed sooner from those that can be invested for the longer term.

"This committee is focused on preserving the longevity of reserve funds and maximizing the value of funds before they are needed."

The funds required sooner must maintain a stable value to protect against a drop in value. Funds retained for the longer term have time to recover from potential losses and can therefore be invested to grow before they are needed. While investing has risk, not investing money at all, is a guaranteed way to reduce the value of our savings, as inflation eats away at the value of idle cash. The committee's mission, therefore, is to invest the longer term funds to increase their value with a focus on risk-management.

Based on the investment policy approved by the board, our investments are to be a mixture of income and equity investments. In addition, the policy contemplates that a portion of the funds have a "mission-based" overlay applied to the investment choices. This means that some of the funds will be invested with a focus on socially and environmentally responsible investments, investments that benefit the local community, and investments that benefit the State of Israel.

The committee is currently working to implement the initial investment decisions. We have made initial investments in State of Israel bonds, which will be "laddered" over the next few years to provide better returns, stability of income, and predictable cash availability. At the same time, those will meet the mission based overlay of benefiting the State of Israel. By the time you read this, we hope to be more fully invested through the acquisition of a small number of mutual funds. In addition to having professional management, these mutual funds will allow us to benefit from lower costs and greater diversification than would be available through individual investments. In total \$1 million will be invested by the committee until such time as those funds are required or the board dedicates more funds to investment.

As you consider your charitable giving throughout the year, please consider supporting the Temple Jeremiah Endowment to provide for the congregation's long-term protection.

LEADERSHIP DEVELOPMENT COMMITTEE

Julie Ford, Chair

MISSION OF THE LEADERSHIP DEVELOPMENT PROGRAM: To sustain a leadership development program that supports Temple Jeremiah's continued success by strengthening volunteer human capital resources and building membership connections, engagement, and leadership capabilities.

Goals:

- Connect and engage with more members in alliance with our Measuring Success goal of improved member connections.
- Identify, engage, train, and develop members to serve in leadership positions within the temple.
- Create a pool of knowledgeable and talented members that the temple Nominating Committee can draw from annually as they seat new board members and officers and that will help sustain our committee structure.

Implementation Plan:

1. Marketing/communication: Highlight for members our temple needs and ways to get involved.
2. Focus groups: Hold small group events to engage members and identify future potential leaders.
3. Educate potential leaders: Create an educational series in which members participate to understand the workings of the temple and to learn what it means to be a Jewish leader within the community at large and Temple Jeremiah in particular. Leadership can take on many forms and doesn't always mean serving on the Board of Directors. Education is key to attraction and engagement.
4. Implementation: Create and individualize action plans for specific members tapped as future leaders in order to provide them with the correct background, training, experience and knowledge to be a successful leader within Temple Jeremiah.

“Goal: Identify, engage, train, and develop members to serve in leadership positions within the temple.”

Nominating Committee:

This committee is designated as a standing committee under our By-Laws, made up of board members and non-board members, to recommend to our membership at large an annual slate for the Board of Directors. This committee will draw on the resources that the Leadership Development Program identifies.

Leadership Development Program Initial Members:

Julie Ford, Diana Kaufmann, Mitchell Slotnick, Laura Zimmerman, Scott Gertz, Judy Craven, Arden Brenner, Tami Hammersley, Roberta Mallon, Alisa Patterson, Lia Lehrer, Daniel Glassman, Gail Modro, Scott Levin, Nadine Tosk, Lynne Sorkin

Nominating Committee Members for 2014-2015 Slate of Officers:

Julie Ford, Diana Kaufmann, Julie Becker, Abra Berkley, Eileen Brottman, Nadine Tosk, Judd Brody, David Ruskin, Scott Levin, Alisa Patterson, Ed Shapiro, Lynne Sorkin

MEASURING SUCCESS

Ed Shapiro, Chair

AS YOU KNOW, TEMPLE JEREMIAH is approximately one year in to the Measuring Success program. Along with the select group of other temples and synagogues in our Chicagoland cohort, we are in the process of improving how we deliver the Temple Jeremiah Jewish experience to our members and prospective members. In particular, during the past year we have been consciously and intentionally focused on enhancing spiritual connections through enhanced personal interactions. Members of the team working on this effort include: Rabbi Cohen, Ken Lorch, Ed Shapiro (Chair), Joel Africk, Michael Myers, Alisa Patterson, Judd Brody, Sami Levi, Amy Torf, Julie Ford, and Danny Glassman. But this effort goes beyond the team. It includes our entire Board of Directors, Rabbi Segal, Dr. Lidsky and the entire educational team, plus our administrative staff.

There are a number of things we have accomplished this past year. For example:

- Our Measuring Success team and our board members completed reading Ron Wolfson's book "Relational Judaism." Our team and our board have discussed many of the ideas in the book. We have also incorporated certain personal connection discussions into our board meetings.
- Our clergy have begun to incorporate some of Wolfson's ideas into everyday TJ life. For example, at Friday Shabbat services, our rabbis ask members/guests to approach someone who they do not know, introduce themselves, and learn a little bit about who they are and their connection to Temple Jeremiah. As many of you have observed, sometimes our rabbis will provide a "prompt" question for the conversation. This active, intentional, "get to know members/guests" is also being implemented during other events (e.g. at a Sunday morning program for parents of 5th grade students, Dr. Lidsky provided parents with a "prompt" question during which each parent had the opportunity to talk, one-on-one, with other parents).
- In an effort to connect with families who have members with disabilities, our rabbis have begun to hold services

"Our rabbis ask members/guests to approach someone who they do not know, introduce themselves, and learn a little bit about who they are."

for families with disabilities. Additionally, for the first time, we opened up our Purim Carnival 30 minutes early so those with disabilities could enjoy the games, music, etc. in a less hectic environment.

- During the summer, we held "pre-Onegs" approximately 30 minutes before Friday Shabbat services. This was an effort to get members/guests to connect with each other before services, rather than after, when many people may need to leave for other commitments.
- During High Holy Day services, many of you met members of our board who volunteered to greet you personally. So in addition to meeting our formal "ushers," we hope you had a chance to say "hello" to our board members on a one-to-one basis.

Here are just some of our goals for the next six months:

- Ongoing training for our board on how to better engage with members and prospective members.
- Expanding our Pre-Oneg "meet and greets" to the entire year (rather than just summer).
- Organizing "invitation only" pre-Shabbat service dinners with our clergy and director of education.
- Considering a special focus on our 14-18-year-olds (e.g. by possibly offering ACT/SAT prep courses and tutoring)
- Increasing outreach to our college-age members.
- Greater outreach to our interfaith couples.
- In addition to all of this, don't be surprised if you receive a call from one of our board members – just to say hello, to ask how you are doing, and inquiring as to any needs that we can meet in a better way.

Enhancing spiritual and personal connections for our members is and will remain an ongoing effort long after our involvement in the Measuring Success program is complete. We look forward to meeting you. We look forward to hearing your "story." We look forward to hearing from you that your spiritual and personal experience at Temple Jeremiah exceeds your needs and expectations.

Measuring Success Committee:

Rabbi Cohen, Ken Lorch, Ed Shapiro, Joel Africk, Michael Myers, Alisa Patterson, Judd Brody, Sami Levi, Amy Torf, Julie Ford, and Danny Glassman

MEMBERSHIP COMMITTEE

Alisa Patterson, Chair



**“Fall in Love with Temple Jeremiah”
Membership Dinner — Nov. 8, 2014**

MISSION STATEMENT: THE MISSION OF THE MEMBERSHIP COMMITTEE within Temple Jeremiah is to retain and engage the current membership and attract new members.

To accomplish this goal, the lay leadership, in partnership with the senior staff, provides activities, programs, events and communications that speak to our entire temple membership and assists in integrating them into the temple community. Temple Jeremiah’s current membership is approximately 940 households. Our membership is diverse and we draw from more than 10 communities and six high schools. Each of the activities below plays an important role in the connection, revitalization, and existence of the temple.

- **Membership Committee:** The Membership Committee had a very successful year; with its ever-increasing pool of members, the committee has been involved in many temple activities.
- **Shana Tovah phone calls:** The committee assisted the temple board in making “Shana Tovah” phone calls to the temple membership in the weeks preceding Rosh HaShanah.
- **High Holy Day Services:** Many committee members assisted in registering visitors for the High Holy Day services, and passing out “goodies” to the children who attended the children services. Throughout the year, these volunteers attended many Shabbat Services, where they welcomed new and prospective members to Jeremiah.
- **The Membership Dinner:** The “Fall in Love with Temple Jeremiah” dinner was held on Nov. 8 at 6:30 p.m., followed by a lovely Shabbat service honoring the new members. Over 150 members attended the dinner. All of our new members received both a phone call and an e-mail, personally inviting them to attend the dinner. A special thank you to Arden Brenner and Lori Ruskin for planning the dinner.
- **Temple Connections:** In an effort to bring in some of the carpool parents, Gail Kayman, in conjunction with Lia Lehrer, arranged to have a yoga/Pilates class meet the first Sunday of each month at the temple. The free class, taught by Jeremiah congregant Lisa Leibow, was an overwhelming success. The Bagel Bar, run and organized by Linda Stolberg, is a gathering place where members can relax, read, or engage in lively conversation. The Bagel Bar offers bagels and healthy snacks to satisfy the morning hunger of religious school students and parents while providing yet another connection for those who have grown to enjoy the camaraderie of fellow temple members. The Bagel Bar has become a weekly routine for many. Thank you to all the volunteers, you are instrumental in the success of the Bagel Bar.
- **New Member Welcome Coffee:** There was a “New Member Welcome Coffee” that took place during the fall to welcome new members, present them with a welcome gift and give them an opportunity to meet some of the committee members.
- **Welcome Bags:** The membership committee delivered over 100 welcome bags to all the new members of our congregation. The bags contained a challah, Shabbat candles and matches, and a packet of Temple Jeremiah information. A special thank you to the Sisterhood for supplying the Shabbat candles and matches.

The Membership Committee’s goal for next year is to increase the participation level in all of these activities, continue to create new opportunities for membership involvement, and as always recruit new members to join Temple Jeremiah.

Membership Committee Members:

Arden Brenner, Judy Craven, Janice Merkin, Cindy Miller, Gail Kayman, Randi Mayer, Linda Shore, Gabrielle Feldman, Melissa Celnik, Abby Lasky, Laura Perez, Lori Wolff, Randi Gurian, Tami Hammersley, Lori Ruskin, Iris Keene, Suzi Meis, Regan Sonnabend, Olga Kornfeld, Linda Stolberg, Cindy Morhaim, Alisa Patterson, and Lia Lehrer

OUTREACH COMMITTEE

Greg and Anne Richards, Co-Chairs

THE MISSION OF THE OUTREACH COMMITTEE is to:

- Welcome interfaith families to take part in synagogue life, to learn more about Judaism and to raise their children as Jews.
- Welcome and educate new Jews-by-Choice as well as those investigating Judaism.
- Inspire Jews to engage more fully in the synagogue community, especially those who feel disconnected or distant.
- Invite non-Jewish partners to explore, study, and understand Judaism, thereby providing an atmosphere of support in which a comfortable relationship with Judaism can be fostered.
- Assist young adults in strengthening their Jewish connection and identity.
- Educate and sensitize the congregational community to be accepting of all who seek a place at Temple Jeremiah.

Activity organized or sponsored by Outreach in the past year has included:

- **Thanksgiving Interfaith Service:** Jeremiah once again co-sponsored the annual Community Interfaith Thanksgiving Service, held in conjunction with 11 other houses of worship along the North Shore that form the Winnetka Interfaith Council. This year, the service was held at The Winnetka Congregational Church. It was a meaningful evening shared by all who attended.
- **Interfaith Families Shabbat:** Temple Jeremiah participated in a community wide Shabbat celebrating interfaith families and the important role they play in our congregation and community. A special invitation went out to all interfaith households, and a nice group gathered for a Learner's Service, during which our clergy offered teachings to heighten awareness of important sections within the service and to deepen the meaning of the service for all in attendance.
- **Winnetka Interfaith Council:** Several temple members serve as members of the Winnetka Interfaith Council, under the direction of chairman Mitchell Slotnick. The council encourages interfaith communication to broaden mutual understanding, facilitates sharing of programs and other activities of common interest, and promotes close working relationships among clergy and laity.

**“Goal: Educate and sensitize
the congregational
community to be accepting
of all who seek a place at
Temple Jeremiah.”**

SOCIAL ACTION COMMITTEE

Mindy Kurtz, Barb and Stephen Miller, Jack Craven, Co-Chairs



THE SOCIAL ACTION COMMITTEE IS DEDICATED to healing the world.

We are committed to identifying social issues facing the community and developing efforts to address those needs. Through relevant social action programs, activities and events we strive to encourage the temple community to come together to engage in tikkun olam.

Feed the Homeless

Thanks to all of our wonderful congregants whose combined efforts made more than 3,000 lunches this year! Those lunches helped to feed men, women and children all over Chicago and in the northern suburbs of Lake County.



The lunches were made by many participating groups. Sunday school classes gathered in the lobby to assemble lunches. One family who wishes to remain anonymous gathered each month in one of the member's homes to assemble 100 lunches. Empty nesters made special trips to temple to bring lunches.

Approximately 50 families gathered in the temple kitchen to make lunches and deliver them to three shelters. Former Sunday school students in their 20s, now living in Chicago, gathered to make over 100 lunches this April. This year we had one the most diverse groups of volunteers to assemble and deliver lunches in the program's history.



The program begins again the first Sunday of October and, as always, you can volunteer through the Sign-Up Genius on the temple website or by contacting the social action committee directly.

Backpack Blessings

Backpack Blessings provides students on free and reduced-priced lunch in three Highland Park schools with easy-to-prepare meals for over the weekend. Backpacks are filled with non-perishable food and discreetly handed out to students on Friday. The students return the empty backpacks to school on Monday and they're refilled for next week's use.

TOP: Feed the Homeless Extravaganza — March 2, 2014

MIDDLE: Backpack Blessings — March 9, 2014

BOTTOM: Keshet GADOL Art Fair — April 27, 2014

Backpack Blessings by the numbers: 100 students served over 28 weeks, 17,717 lbs of food, 5,600 total meals. What an impact!

Whittier School Reading Program

Eighteen volunteers provided support to teachers and students at Whittier Elementary School in Waukegan for the 8th year. We provide support in five programs: 3R's coaching in the classrooms,

(continued)

SOCIAL ACTION COMMITTEE, *continued*

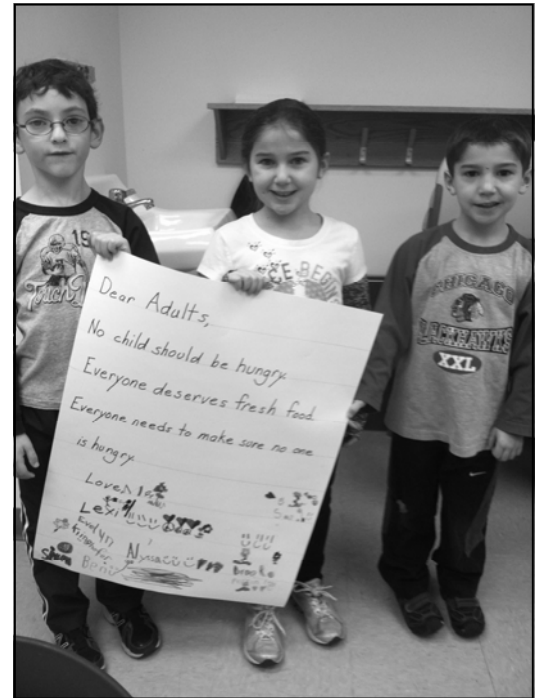
Mindy Kurtz, Barb and Stephen Miller, Jack Craven, Co-Chairs

volunteering at the Book Fair twice a year, uniform donations, a gently used school supply collection, and a winter coat collection. Volunteer opportunities are available throughout the school year and the summer.

Keshet GADOL Program

The Art Show took place on April 27, 2014. Twelve students of Keshet's GADOL Program (over age 21) created, displayed and sold 80 mixed media paintings at temple over two Sunday school sessions. Pieces sold for \$10 to \$15 with all proceeds going to the artists. The show was a great success.

The many benefits of the art fair include providing funds to the disabled artists and offering them an opportunity to feel good about themselves while fostering an atmosphere of good will, along with educating the congregation about the GADOL program and an appreciation of the talents of these young disabled artists.



Family Promise

Family Promise Chicago North Shore provides families with young children who are temporarily homeless with a supported pathway to self-sufficiency. By providing both day and night time havens, nutritious meals, transportation, and social services to address issues that may have contributed to the situation, Family Promise gives parents a chance to focus on finding employment and provides guidance to create a plan to return to permanent housing. In 2013-2014, Temple Jeremiah hosted families in December and June. In addition to providing shelter for a week, volunteers provided meals and socialized with the guests.



Advocacy

Advocacy at Temple Jeremiah is focused on social justice issues. Our program has two facets. The first is to educate congregants and the community about social justice issues. The second is to teach people how to communicate their opinions on local, state, and federal programs and legislation to legislators. To date, our focus has been on hunger and legislation for the Supplemental Nutrition Assistance Program (SNAP).

Hunger Summit: Dec. 6-8, 2013

Hunger Summit

More than 400 people attended the Temple Jeremiah Hunger Summit, a three-day community-wide advocacy event focusing on hunger in our community from Dec. 6-8.

(continued)

SOCIAL ACTION COMMITTEE, *continued*

Mindy Kurtz, Barb and Stephen Miller, Jack Craven, Co-Chairs

The successful weekend culminated on Sunday with a panel discussion featuring an unprecedented seven legislators: Representatives Jan Schakowsky and Brad Schneider; State Senators Daniel Biss, Julie Morrison; and State Representatives Scott Drury, Laura Fine (Jeremiah congregant) and Elaine Nekritz.

The weekend began on Friday evening during Sabbath worship with a presentation on food insecurity in our community from Pete Schaefer of Northern Illinois Food Bank. As president of the food bank, Schafer has seen the number of hungry people in the suburbs rapidly increasing. "There may be people living next to you who are food insecure and you just don't know it," he said.

On Saturday afternoon, the temple showed the poignant film "A Place at the Table," followed by a discussion led by David Lee of Feeding America. Lee explained how the federal government funds SNAP (Supplemental Nutrition Assistance Program), the program formerly known as food stamps. He also explained how five calls to a legislator from people living in their district is considered significant and can make a real difference. While adults and teenagers learned about the government's role in solving hunger on Sunday morning, the students in religious school held a food drive, listened to a speaker from the Northfield Township Food Pantry, and wrote and decorated letters to legislators on poster board.



Social Action Co-Chairs: Barbara Miller, Stephen Miller, Mindy Kurtz, Jack Craven

Social Action Committee: Judy Craven, Lori Kash, Vicki Stoller, Andrea Goodman, Julie Becker, Michael Pfeifer, Carey Gelfand, Rabbi Cohen, Rabbi Segal, Anne Lidsky, Abra Berkley, Marcia Osher, Barb Kite, Doug Shabelman, Gayle Nelson, Brad Buchanan, Anne Richards, Greg Richards, and Lori Ruskin



TOP AND MIDDLE: Family Promise: July 2013

BOTTOM: JeTY Backpack Blessings with Rep. Brad Schneider — April 2014

SPIRITUAL LIFE COMMITTEE

Joel Kaufmann, Chair

FOLLOWING THE CONGREGATION'S enthusiastic reception to the introduction of a prayer service on the second day of Rosh HaShanah in 2012, the committee supported continuing this practice. Once again our temple family responded in an overwhelmingly positive way — not only to that, but also to all the alternative worship experiences our clergy has offered during the High Holy Days services.

In response to a recommendation from the Long Range Plan, we have discussed options for adding educational videos to the temple website. This is a subject that is being seriously considered.

“The committee strongly supports the introduction of additional entry points to the celebration of Shabbat by offering alternatives in addition to the regular Friday service.”

Keeping in mind our goal to increase attendance at Friday evening services, the committee strongly supports the introduction of additional entry points to the celebration of Shabbat by offering alternatives in addition to the regular Friday service. Possibilities include a Torah study session, a youth-led service, and a “movement service” perhaps including yoga. Other options are also being explored. This “Synaplex concept” is an idea that we expect to introduce in the next year.

Of course we were both saddened to hear of Cantor Zussman's retirement as well as happy for her to be able to pursue the next chapter in her life. Once again we are delighted to have spent another enlightening and stimulating year under Rabbi Cohen's inspirational leadership. We look forward to working with him in the upcoming year.

Spiritual Life Committee:

Rabbi Paul Cohen, Rabbi Emily Segal, Cantor Amy Zussman, Chuck Alexander, Ernie Frankl, Randi Gurian, Herb Horn, Diana Kaufmann, Jeff Krupp, Ken Lorch, and Mitch Slotnick

YOUTH COMMITTEE

Amy Torf, Chair



OUR YOUTH PROGRAMMING continues to thrive and engage Temple Jeremiah youth of all ages! With a new youth group (JK: Jeremiah Kids) and building on two new programs from last year (Babies and Bagels and Jeremiah Buddies), we now have youth programming for all ages from babies to high school. Youth group activities this year were headed by Youth Programs Associate Lizzy Scheinkopf. This year was very successful for our youth groups, continuing to build and enhance the connections of our Temple Jeremiah youth – to each other, to Temple Jeremiah, to the Reform movement, and to Judaism. Below is a summary of the year's activities in youth programming.



JeTY (Jeremiah Temple Youth, grades 9-12):

Our teens build leadership skills as they help lead this youth group including planning events, leading Shabbat services and performing tikkun olam. JeTY is led also by the JeTY Board, a wonderful group elected to positions that mirror the positions of the regional youth group board, who join with our Youth Programs Associate to plan and execute all JeTY events and programs. JeTY also hosts the Purim Carnival for the congregation, with the JeTYites taking responsibility for the planning and execution of many elements of the carnival under the guidance of Lizzy and Rabbi Segal.

Jr JeTY (grades 6-8): This youth group serves our middle schoolers and provides an entry point to our high school youth group. Toward the end of the year, 8th graders are integrated into JeTY programming to help connect them to this group before the change of the year.

Club 345 (grades 3-5): Attendance at events for 3rd through 5th graders continues to be very strong, with primarily social programs while incorporating Jewish learning and social action into the events as well.

JK (Jeremiah Kids, grades K-2): Our newest youth group, for children grades K-2 and their families, was a big success. We held four events this year, all of which were well-attended and thoroughly enjoyed. Two of our events were focused on social action, and two were primarily social in nature. We are looking forward to



Purim Carnival — March 2014

(continued)

YOUTH COMMITTEE, *continued*

Amy Torf, Chair

building on this year's success in the coming year.

Jeremiah Buddies (Preschool): This group for preschoolers and their families met on six Sunday mornings throughout the year. The group enjoyed crafts, games, and social time together, often connected with the time of year, a Jewish value, or an upcoming holiday. We look forward to the continuation of this program in the year to come.

Babies and Bagels (birth to age 2): This weekly gathering for babies and a caregiver is an opportunity to meet other Jewish families with babies. Prospective members have often attended these gatherings and it has been an entrée to connection to the temple and to temple membership.



Youth Programming hosts Nosh & Mingle, an opportunity for 3rd-7th graders to gather in the youth lounge to enjoy social time and a snack prior to Monday or Wednesday Hebrew School classes. Youth Programming also hosts a gathering for Madrichim (religious school aides) between sessions of religious school for these teens to gather, spend time together, and have bagels for breakfast. This continues to be a popular gathering and a nice way for the teens to relax and connect.

JeTY Alternative Winter Break: The Everglades — December 2014

Youth Programming also hosts a gathering for Madrichim (religious school aides) between sessions of religious school for these teens to gather, spend time together, and have bagels for breakfast. This continues to be a popular gathering and a nice way for the teens to relax and connect.

Highlights of the year for Youth Programming:

- 12 teenagers went on JeTY's fourth annual Alternative Break Trip, this year traveling to the Everglades to do environmental conservation and volunteering.
- Lizzy Scheinkopf, our Youth Programs Associate, planned and led a fantastic leadership training retreat at OSRUI for the JeTY Board.
- JeTY, and Jeremiah as a congregation, hosted Kol Bo, the final weekend convention of the year for NFTY-CAR, our regional chapter of the national Reform Jewish youth group.
- A wonderful group of Club 345 members and their families volunteered to help those in need at The ARK.
- Club 345 and Jr JeTY members enjoyed a delicious Chocolate Seder, a fun way to connect to Passover and become even more familiar with the seder and its elements.
- The Purim Carnival, which has been the only fundraiser for Youth Programs, was incredibly successful this year, in terms of money raised, record attendance, and a great time enjoyed by all.

Many people have put in great effort to help create and maintain this wonderful programming for our Temple Jeremiah youth.

Thank you to the following people:

The volunteers who assisted with youth events: Jake Howard, Kelly Kerwin, Geoff Mogilner, Robin Axel, Sigal Klipstein, Francie Walls Rosenstein, Erick and Sarah Weingart

The 5774 JeTY Board: Benji Perez, Joey Barr, Maddie Goldman, Dan Lasky, Andrew Grossman, Dana Ford, Devin Lanin, Spencer Lavin, Ariana Michel, Lauren Lerner, and Brendan Gold

Our staff: Lizzy Scheinkopf and Rabbi Segal

APPENDIX:

2013-2014 WORSHIP & PROGRAMS

ADULT LEARNING:

- Action Showcase: Go Green to Save Green!
- “Chanukah and Christianity: Intriguing Relationships Through the Ages”
- Honest Reporting
- “In Our Own Hands” with Morris Rosman, WWII veteran
- “Jewish Ghost Stories: Golem, Ghosts, and Goblins”
- JUF Brunch with Rabbi David Saperstein
- Lunch and Learn downtown and at Temple Jeremiah
- Magen David Adom
- North Shore Senior Center
- Pulse of Our World
- Pulse of Our World: The Environment
- Red’s Nursery
- “Refuge: Stories of the Selfhelp Home”
- Scholar-in-Residence: Rabbi Jeffrey Salkin
- Songs of the Holocaust
- “Suite Francaise” book discussion
- “Texts, Tweets, and Torah”
- “The Jewish Response to Christian Missionaries”
- “The Warmth of Other Suns” book discussion
- “To Your Health ... For Now and the Future”
- Tu BiShvat Seder
- “Watering the Desert and Making It Bloom”
- “Welcome Back the Israeli Consulate”
- “Winning the Israel Debate on Campus” with StandWithUs
- “Women of the Bible”
- “YIVO: What Is It?”

BROTHERHOOD

- Brotherhood Backpack Blessings
- Brotherhood Shabbat
- Family Bingo

- Jazz Showcase
- Kibbitz ‘n’ Bites breakfasts
- Northwestern Basketball Game
- Opening Breakfast
- Spring Invasive Species Project

CARING COMMUNITY:

- Caring Community Thanksgiving Meal
- Soup’s On: Let’s Stir the Pot

COMMUNICATIONS:

- Adult Learning Bookmark
- Annual Report
- Covenant (monthly bulletin)
- E-newsletters and temple e-mails
- Membership directory
- Memorial book
- Posters/flyers for temple events
- Press releases and ads
- Sabbath Light
- Social media: Facebook, Twitter, LinkedIn, YouTube, etc.
- Website (www.templejeremiah.org)

EARLY CHILDHOOD

EDUCATION/PROGRAMMING:

- Parent-Tot Program
- PJ Havdalah
- PJ Library Resources
- Shabbat Yeladim
- Tot Shabbat

GREEN TEAM

- Action Showcase: Go Green to Save Green!
- Community-Supported Agriculture
- Garden Club Dinner
- Natural Born Tillers: Garden Prepping and Planting
- Styrofoam Collection
- Take Care of Our Beaches
- Tu BiShvat Seder
- “Watering the Desert and

Making It Bloom”

HEBREW & RELIGIOUS SCHOOL / CONFIRMATION / POST-CONFIRMATION:

- 3rd grade “Kids on the Block”
- 5th-6th Grade Retreat
- ADL speaker, David Kirzman
- Aleph Celebration
- Backpack Blessings
- Boker Tov breakfast for PreK and K families
- Chanukah Celebration
- Confirmation / Confirmation Retreat
- Confirmation Bake Sale
- Confirmation Challenge Course to Northbrook District Park
- Consecration Ceremony
- “Cut the Drama”
- “De-Stress with Us”
- Down Syndrome speaker
- End-of-school celebration and BBQ
- Erika’s Lighthouse speaker
- Ethical Wills” program
- “Executive Function Skills to the Rescue!”
- Facing Forward to Prevent Homelessness
- Feed the Homeless
- Grade-level Shabbat dinners
- Hebrew School Graduation
- Honest Reporting speaker
- Hunger Summit
- “Israel and Technology” presentation
- Israel Experience
- “Jewish-Muslim Texting” with Or Tzedek
- “Keeping in Balance” speaker
- Keshet Art Fair
- Keshet speaker
- Linus Project
- Madrichim (student aides)
- “Middle School Challenges”
- “Mirror Mirror” (self image)
- Open Houses

(continued)

APPENDIX:

2013-2014 WORSHIP & PROGRAMS

- Opening Day School Assembly
- Or Tzedek
- Pizza in the Hut
- Post-Confirmation Program
- Purim Schpiel and Carnival
- Rabbi Jeffrey Salkin, Scholar-in-Residence, spoke to Confirmands
- The Jewish Response to Christian Missionaries
- “Relationships Aren’t Easy”
- Simchat Torah celebration and dinner
- SKIP (Send a Kid to Israel Partnership)
- SPARK with our senior congregants
- Speaker about bullying
- Speaker about stress management
- Trip to Islamic House of Worship
- Trip to The ARK
- Trip to Uptown Café
- Visit to Baha’i House of Worship
- Visit to Central Synagogue
- Volunteering at Maot Chitim
- Yom HaShoah service

SHIR JOY (JUNIOR CHOIR):

- Junior Choir Retreat
- Performances at nursing homes
- Shabbat dinner
- Sleepover

MEMBERSHIP:

- Bagel Bar
- “Fall in Love with Temple Jeremiah” Membership Celebration Dinner
- Pilates and Yoga classes
- Shana Tovah phone calls
- Welcome bags

OUTREACH:

- Interfaith Thanksgiving Worship
- Interfaith Family Shabbat

SISTERHOOD:

- High Holy Day Food Drive
- Sisterhood Under the Stars: Rosh Chodesh Av
- Gift Shop
- Sisterhood Shabbat
- Torah Study with Rabbi Segal
- Women of the Wall Solidarity Gathering
- Women’s Passover Seder

SOCIAL ACTION & ADVOCACY:

- Advocacy 101: Tools for Promoting Positive Change
- Backpack Blessings
- Caring Community Thanksgiving Meal
- Family Promise
- Feed the Homeless
- Feed the Homeless Extravaganza
- Feed the Homeless: Chicago Young Adults Edition
- Hunger Summit
- Keshet GADOL Art Fair
- SNAP Challenge
- Whittier School Uniform Donation
- Wishes for Whittier

TEMPLE EVENTS:

- 90+ Luncheon
- “A Topsy Turvy Chanukah Party”
- Annual Board Meeting and Dinner
- Annual Noni Dodge Blood Drive
- Celebrating Amy Weekend
- “Chai Society: You Gotta Have a

Heart”

- Golder Lecture with Dr. Basit Bilal Koshul
- Jeremiah at Ravinia
- Life Line Screening Event
- “Old Jews Telling Jokes”
- Sababa! Concert
- “The Decade of the 1930s”
- Women’s Programming at Jeremiah: A Conversation

HIGH HOLY DAY WORSHIP PROGRAMS:

- Alternative High Holy Day Worship
- Children’s and Youth High Holy Day Worship
- High Holy Day Special Needs Worship
- JeTY High Holy Day Worship
- Rosh HaShanah and Yom Kippur Worship
- Selichot: Charting Our Spiritual Path
- Tashlich

FESTIVAL/HOLIDAY WORSHIP PROGRAMS:

- Erev Sukkot “Pizza in the Hut” and Sukkah Decorating
- Sukkot “Java in the Hut” and Worship
- Erev Simchat Torah Worship, Dinner, and Dancing
- Simchat Torah “Tea is for Torah,” Worship, and Yizkor
- Adult Purim Party: Megillah in Morocco
- Shushan Shuffle, Purim Schpiel, and Purim Carnival
- Special Needs Purim Carnival
- Matzah Brei and Passover Worship
- “From Desert to Dessert,” Passover Worship, and Yizkor

(continued)

APPENDIX:

2013-2014 WORSHIP & PROGRAMS

- Erev Shavuot Program: Shavuot with Topsy Paint
- Shavuot Morning Worship and Yizkor

SHABBAT WORSHIP PROGRAMS:

- Erev Shabbat Worship
- Friday Night Live!
- H(OUR) Shabbat Goes to Camp
- H(OUR) Shabbat Worship
- Kabbalat Shabbat Worship
- Kabbalat Shabbat Worship by the Garden
- Prospective and New Member Kabbalat Shabbat Worship and BBQ
- Shabbat Across America
- Shabbat Morning Worship
- Shabbat Shira
- Shabbat Worship with the Ice Cream Truck
- Tefilah and Torah
- Tot Shabbat Worship

YOUTH GROUP/YOUTH DEPARTMENT EVENTS

Ongoing Programs:

- Babies and Bagels (for babies and toddlers, weekly)
- Jeremiah Buddies (preschoolers and families, monthly)
- Madrichim Gatherings between Religious School sessions
- Nosh & Mingle prior to each

Hebrew School session

JK (Jeremiah Kids, for K-2 grades):

- All About Animals at Noggin Builders
- Havdalah & Pizza Dinner
- Milk & Bookies benefitting homeless kids
- Shabbat Picnic Lunch in the Park

Club 345 (3rd-5th grade):

- Bowling
- Chocolate Seder
- Ice Skating
- Kickoff
- Movie in the Sukkah
- Muppet Movie Matinee
- Noggin Builders
- Pajama Party
- Volunteering at The ARK
- Xtreme Trampolines

Jr. JeTY (6th-8th grade):

- Bowling
- Chocolate Seder
- Color Me Mine/Ben & Jerry's
- Key Lime Cove
- Kickoff
- Mini Golf
- Top Chef
- Volunteered at Purim Carnival
- Whirlyball

JeTY (9th-12th grade):

- Alternative Winter Break: The Florida Everglades
- Backpack Blessings

- BBQ & Elections
- End of year Shul-In
- Hosted NFTY-CAR Kol Bo
- Hunger Summit
- JeTY Board Retreat at OSRUI
- JeTY Service
- Key Lime Cove
- Kickoff
- Laser Tag
- Lounge Night
- Monthly Board Meetings
- NFTY-CAR Kickoff
- NFTY-CAR Summer Kallah
- NFTY-CAR Winter Kallah
- Paintball
- Planned & Ran Purim Carnival
- Shul-in
- Tailgate

TEMPLE LEADERSHIP

BOARD OF DIRECTORS

2013-2014

PRESIDENT

Ken Lorch

EXECUTIVE VICE PRESIDENT

Joel Africk

VICE PRESIDENTS

Randi Gurian
Barb Miller
Alisa Patterson
Michael Schack
Ed Shapiro

TREASURER

Jeffrey Krupp

RECORDING SECRETARY

Amy Torf

LEGAL COUNSEL

Lori Goldstein

BOARD OF DIRECTORS

Judd Brody
Deb Dreyfuss-Tuchman
Gabrielle Feldman
Art Gunther
Fred Kagan
Abby Lasky
Sami Levi
Scott Levin
David Loundy
Marc Mayer
Michael Myers
Brad Ross
David Ruskin
Lynne Sorkin
Alan Toban
Nadine Tosk
Sara Turover
Stephanie Victor

BROTHERHOOD PRESIDENT

Alan Turover

SISTERHOOD PRESIDENT

Ann Milstein

IMMEDIATE PAST PRESIDENT

Julie Ford

BOARD OF DIRECTORS

2014-2015 (proposed slate)

PRESIDENT

Ken Lorch

EXECUTIVE VICE PRESIDENT

Joel Africk

VICE PRESIDENTS

Randi Gurian
Barb Miller
Alisa Patterson
Michael Schack
Ed Shapiro

TREASURER

Jeffrey Krupp

RECORDING SECRETARY

Stephanie Victor

LEGAL COUNSEL

Lori Goldstein

BOARD OF DIRECTORS

Charles Alexander
Judd Brody
Gabrielle Feldman
Fred Kagan
Steve Kleiman
Abby Lasky
Sami Levi
Scott Levin
David Loundy
Gail Modro
Michael Myers
Brad Ross
David Ruskin
Lynne Sorkin
Alan Toban
Nadine Tosk
Sara Turover

BROTHERHOOD PRESIDENT

Alan Turover

IMMEDIATE PAST PRESIDENT

Julie Ford

PAST PRESIDENTS

(in the order in which they served)

Fred Henschel ל"י
Robert B. Cook ל"י
Robert W. Powell ל"י
Robert H. Goldberg
Edgar L. Cadden ל"י
Meyer M. Israel ל"י
Marvin H. Coleman ל"י
Stanley C. Golder ל"י
James R. Foster
Joan J. Golder
Ronald A. Sandler
Barbara S. Bleckman
Jacqueline M. Slavick
Herbert Horn
Michael Pollak
Diana Kaufmann
Mitchell L. Slotnick, Ph.D.
Howard Lanznar
David Golder

TEMPLE JEREMIAH STAFF

Rabbi Paul F. Cohen, D. Min.
Rabbi Emily E. Segal
Robert D. Schreiber, D.D., *Rabbi Emeritus*
Cantor Amy J. Zussman
Dr. Allan Tarshish ל"י
Daniel Glassman, *Executive Director*
Anne M. Lidsky, Ph.D., RJE, *Director of Religious Education*
David Lornson, *Organist & Choir Director*
Rabbi Deborah Helbraun, *Hebrew School Principal*

ל"י of blessed memory

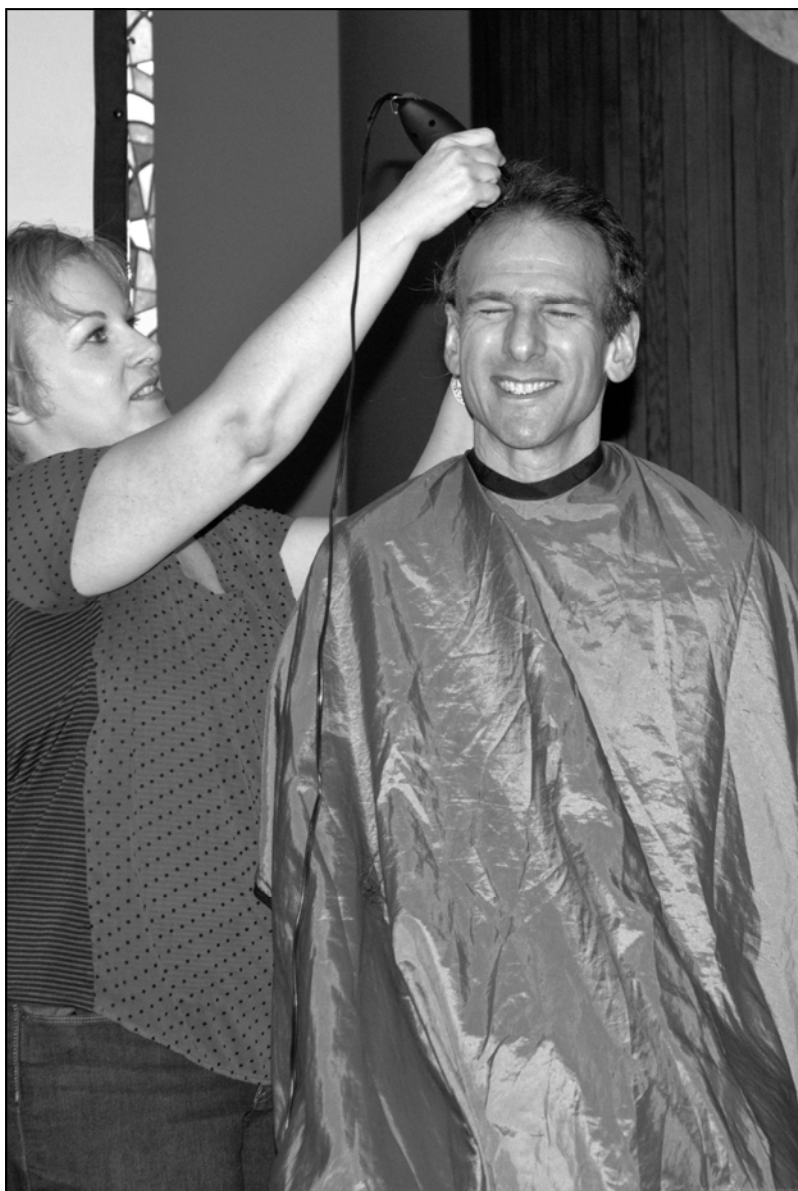
OFFICE

Phyllis Burg
Jill Farkas
Sheila Greenfield
Lia Lehrer
Jennifer Rosen
Donna Ryback
Lizzy Scheinkopf
Barb Kite

MAINTENANCE

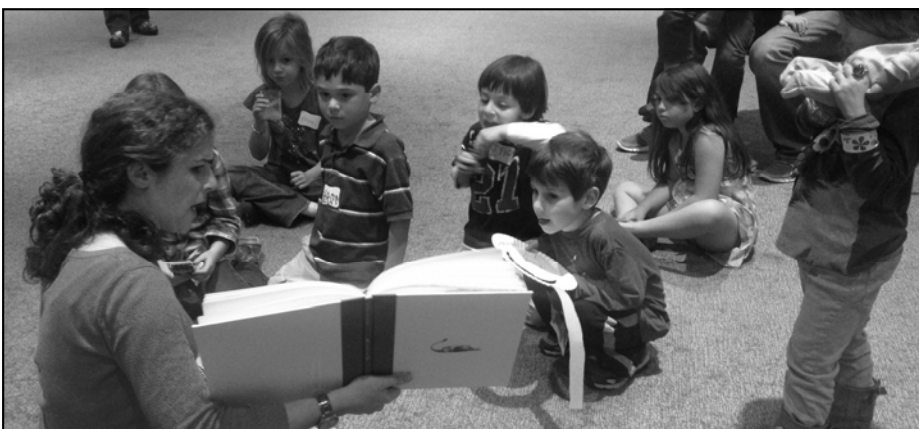
Jolanta Dabala
Juan Carlos Sanchez
Patricia Hernandez
Frank Pasek
Jesse Sanchez
Jean Sanchez

THE YEAR IN REVIEW



CLOCKWISE FROM TOP RIGHT: 1. Rabbi Cohen shaved his head at the Purim Schpiel to raise money for pediatric cancer research. 2. Chai Society: "You Gotta Have a Heart." 3. Chat and Chew: Broadway. 4. "Can You Tell Me How to Get To Hamantashen Street?" Purim Schpiel. 5. Celebrating Amy Oneg with Shir Joy.

THE YEAR IN REVIEW



CLOCKWISE FROM TOP RIGHT: 1. Tot Shabbat. 2. Bagel Bar. 3. The Decade of the 1930s. 4. Confirmation Retreat. 5. JK Milk and Bookies. 6. First Grade Consecration. 7. A Topsy Turvy Chanukah Party.



937 Happ Road
Northfield, IL 60093

Phone: 847.441.5760

Fax: 847.441.5765

www.templejeremiah.org
office@templejeremiah.org